

State Assessment and Budget Review Using the Building Needs Assessment



Dale Brungardt

November 3, 2022

KASBO Fall Conference - Manhattan

Before we get started ...

- Requires time to complete – but very doable.
- Many of the items it requires ... **you are already doing.**
- Teaching Kansas Kids is important work...

***This is our work!!!
Linking the Dollars to Learning to
Create the Best Opportunities for
Students!***



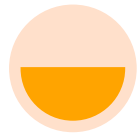
SS for HB2567 Sec. 12.

On and after July 1, 2022, K.S.A. 2021 Supp. 72-1163 is hereby amended to read as follows:

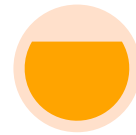
72-1163. (a) (1)



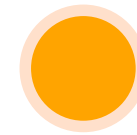
Each year, the **board of education of a school district** shall conduct an **assessment of the educational needs** of each attendance center in the district.



Such assessment shall be **published** on the **school district's website**.



Information obtained from such needs assessment shall be used by the board when **approving the budget of the school district** to ensure improvement in student academic performance.



In the minutes of the meeting at which the board approves its annual budget, the board shall include that such needs assessment was provided to the board, the board evaluated such assessment, and how the board used such assessment in the approval of the school district's budget.



SS for HB2567 Sec. 12.

Sec. 12. **On and after July 1, 2022**, K.S.A. 2021 Supp. 72-1163 is hereby amended to read as follows: 72-1163. (a) (1) **Each year the board of education** of a school district **shall conduct an assessment of the educational needs of each attendance center** in the district. Such assessment shall be published on the school district's website. Information obtained from such **needs assessment shall be used by the board when approving the budget** of the school district to ensure improvement in student academic performance. In the **minutes of the meeting** at which the board approves its annual budget, the board shall include that such needs assessment was provided to the board, the board evaluated such assessment and how the board used such assessment in the approval of the school district's budget.



SS for HB2567 Sec. 12.

2. Each year, the board of education of a school district shall review state assessment results and, as part of such review, shall document the following:
 - A. The **barriers** that must be overcome to have all students **achieve proficiency above level 2** for grade level academic expectations on such assessments;
 - B. Any **budget actions**, including, but not limited to, recommendations on reallocation of resources that should be taken to address and **remove such barriers**; and
 - C. The amount of **time** the board estimates it will take for all students to **achieve proficiency above level 2** for grade level academic expectations on the state assessments if such budget actions are implemented.



SS for HB2567 Sec. 12.

3. The budget of the school district shall **allocate sufficient moneys** in a manner reasonably calculated such that all students may achieve the goal set forth in K.S.A. 72-3218(c) (**Rose Capacities**), and amendments thereto. The board also shall prepare a summary of the budget for the school district. The budgets and summary shall be in the form prescribed by the director pursuant to K.S.A. 79-2926, and amendments thereto.
 - b. The budgets, the summary of the proposed budget, the needs assessment and the state assessment documentation shall be on file at the administrative offices of the school district and available on the school district's website.



SS for HB2567 Sec. 12.

(3. continued)

- c. The **notice required to be published by K.S.A. 79-2929 (Code 99),** and amendments thereto, shall include a statement that the budgets, the summary of the proposed budget, **the needs assessment and state assessment documentation is on file at the administrative offices of the district and available on the school district's website.**



Key Points

Board Consideration in the Budgeting Process

A. Building Needs Assessments

B. State assessments

1. The **barriers** that must be overcome to have all students achieve proficiency above level 2 for grade level academic expectations on such assessments;
2. Any **budget actions**, including, but not limited to, recommendations on reallocation of resources that should be taken to address and remove such barriers; and
3. The amount of **time** the board estimates it will take for all students to achieve proficiency above level 2 for grade level academic expectations on the state assessments if such budget actions are implemented.



Building Needs Assessment Forms



www.ksde.org. > Agency > School Finance > Guidelines and Manuals



Kansas leads the world in the success of each student.

Search...



[Skip Navigation](#)

[Subject Index](#) | [0-9](#) | [A](#) | [B](#) | [C](#) | [D](#) | [E](#) | [F](#) | [G](#) | [H](#) | [I](#) | [J](#) | [K](#) | [L](#) | [M](#) | [N](#) | [O](#) | [P](#) | [Q](#) | [R](#) | [S](#) | [T](#) | [U](#) | [V](#) | [W](#) | [X](#) | [Y](#) | [Z](#)

[Teaching & Learning](#) ▼

[Policy & Funding](#) ▼

[Programs & Services](#) ▼

[Data Central](#) ▼

[Agency](#) ▼

[Board](#) ▼

[Agency](#) » [Fiscal and Administrative Services](#) » [School Finance](#)

School Finance

School Finance distributes state and federal aid to USDs, food service providers, and other educational agencies. Provides data that is beneficial to school boards, school administrators, legislators, and others who may be interested in the educational programs of local public school districts.

Additional Resources & Information

[What's New?](#)

[Budget Information](#)

[Council of Superintendents](#)

[Guidelines and Manuals](#)

[Indirect Cost Rates](#)

[Interest Letter](#)

[Legal Max General Fund, School Finance Studies](#)

[- Base Aid For Student Excellence \(BASE\)\(KSA 72-5132\)](#)

School Finance Director

Dale Brungardt

(785) 296-3872

DBrungardt@ksde.org

Assistant Director

Sara (Barnes) McCullah

(785) 296-3872

sbarnes@ksde.org

Questions about this page contact:



- [Unencumbered Cash Balance \(PDF\)](#) instructions

Guidelines

- [1,116 Hours School Year Requirement \(PDF\)](#)
- [Accounting Handbook](#) - recording expenditures in USD budget
 - [ESSER Reporting - Common Expenditures](#)
 - [School Activity Funds \(PDF\)](#) Student and District Activity Funds; Non-Activity Funds; Petty Cash
- [At-Risk Pupil Assistance Program Guidelines \(PDF\)](#)
- [At-Risk Pupil weightings - history of school finance formula components \(PDF\)](#)
- [Building Needs Assessment and State Assessment Review in the Budgeting Process](#)
 - [Needs Assessment and State Assessment Review Guidelines \(PDF\)](#)
 - [Needs Assessment - Power Point from 5/26/2022 \(PDF\)](#)
 - [Templates](#)
 - [Needs Assessment and State Assessment Review Template \(Excel\)](#)
 - [Needs Assessment Template \(Word\) \(PDF\)](#)
 - [BOE State Assessments Review Template \(Word\) \(PDF\)](#)
 - [State Assessments Review Template \(building\) \(Word\) \(PDF\)](#)
- [Capital Outlay Resolution and Spending Guidelines \(Word\) \(PDF\)](#)
- [Child Care Facility Licensure Requirements \(Word\)](#)
- [Competitive Bidding Guidelines \(Expenditures Over \\$20,000\) \(PDF\)](#)
- [Department of Administration Division of Purchases](#)
- [Fair Labor Standards Act \(FLSA\) - FAQ for schools on minimum wage and overtime requirements](#)
- [FLSA - Rule 10 Coaches DOL Opinion - Payment of Rule 10 coaches](#)
- [Financial Reporting Guidelines \(PDF\)](#)
- [Investment of Idle Funds \(Includes Local Public Funds Deposits\) \(PDF\)](#)



Building Needs Assessment

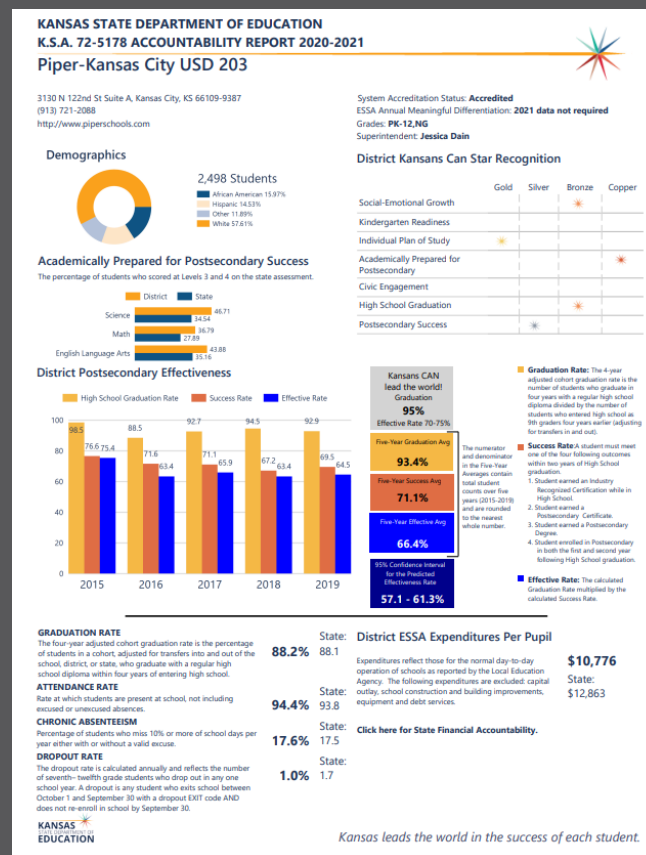
- Where it begins
- Created and conducted by EACH building.
- May already be completed.
- Review Data:
 - Building accountability reports.
 - Other data as required – Performance Accountability, AMOSS, School Finance
 - Involve staff and other stakeholders.





Accountability Report

- Use the accountability report posted on your district's website for data review and discussion.
- Data is suppressed.
- Data will not reveal Personally Identifiable Information (PII).
- May use other data sources, but be cognizant of PII in public meetings.



Piper-Kansas City USD 033

K.S.A. 72-5178 Accountability Report 2020-2021

District Academic Success

State Assessment scores are displayed by student subgroup over three years in three subjects: Math, English Language Arts (ELA), and Science. Assessment scores are not available for the 2020 school year.

ALL STUDENTS

	2018-19			2019-20			2020-21		
	Math	ELA	Sci	Math	ELA	Sci	Math	ELA	Sci
Level 1	17.79	20.49	27.36	N/A	N/A	N/A	24.75	20.81	27.79
Level 2	36.13	32.58	27.16	N/A	N/A	N/A	38.44	35.27	25.48
Level 3	31.20	32.81	28.77	N/A	N/A	N/A	26.70	33.21	31.27
Level 4	14.86	14.09	16.70	N/A	N/A	N/A	10.09	10.67	15.44

FREE AND REDUCED LUNCH STUDENTS

	2018-19			2019-20			2020-21		
	Math	ELA	Sci	Math	ELA	Sci	Math	ELA	Sci
Level 1	33.33	36.66	33.70	N/A	N/A	N/A	41.56	34.92	46.80
Level 2	41.25	38.33	32.58	N/A	N/A	N/A	39.91	39.28	29.78
Level 3	18.33	20.00	24.71	N/A	N/A	N/A	14.40	22.61	21.27
Level 4	7.08	5.00	8.98	N/A	N/A	N/A	4.11	3.17	2.12

STUDENTS WITH DISABILITIES

	2018-19			2019-20			2020-21		
	Math	ELA	Sci	Math	ELA	Sci	Math	ELA	Sci
Level 1	73.45	67.54	65.21	N/A	N/A	N/A	N/A	N/A	N/A
Level 2	20.35	24.56	23.91	N/A	N/A	N/A	N/A	N/A	N/A
Level 3	5.30	4.38	8.69	N/A	N/A	N/A	N/A	N/A	N/A
Level 4	0.88	3.50	2.17	N/A	N/A	N/A	N/A	N/A	N/A

AFRICAN-AMERICAN STUDENTS

	2018-19			2019-20			2020-21		
	Math	ELA	Sci	Math	ELA	Sci	Math	ELA	Sci
Level 1	34.51	35.68	49.35	N/A	N/A	N/A	43.00	37.01	45.97
Level 2	41.15	40.52	32.46	N/A	N/A	N/A	37.00	39.42	28.73
Level 3	19.02	18.94	16.88	N/A	N/A	N/A	17.00	19.71	22.96
Level 4	5.30	4.84	1.29	N/A	N/A	N/A	3.00	3.84	2.29

HISPANIC STUDENTS

	2018-19			2019-20			2020-21		
	Math	ELA	Sci	Math	ELA	Sci	Math	ELA	Sci
Level 1	26.11	26.25	31.50	N/A	N/A	N/A	27.46	23.85	39.13
Level 2	41.11	34.63	23.28	N/A	N/A	N/A	43.00	34.01	23.16
Level 3	23.88	29.60	34.24	N/A	N/A	N/A	21.24	33.50	23.16
Level 4	8.88	9.49	10.95	N/A	N/A	N/A	8.29	6.62	14.49

N/A: To protect student privacy, when a subgroup has fewer than 10 students, the data are not displayed.

ACT Performance (2021 School Year)

ACT is a national college admissions exam that includes subject level tests in English, Math, Reading and Science. Students receive scores that range from 1 to 36 on each subject and an overall Composite score. This report provides the average Composite score for the 2021 graduating seniors who took the ACT as sophomores, juniors, or seniors.

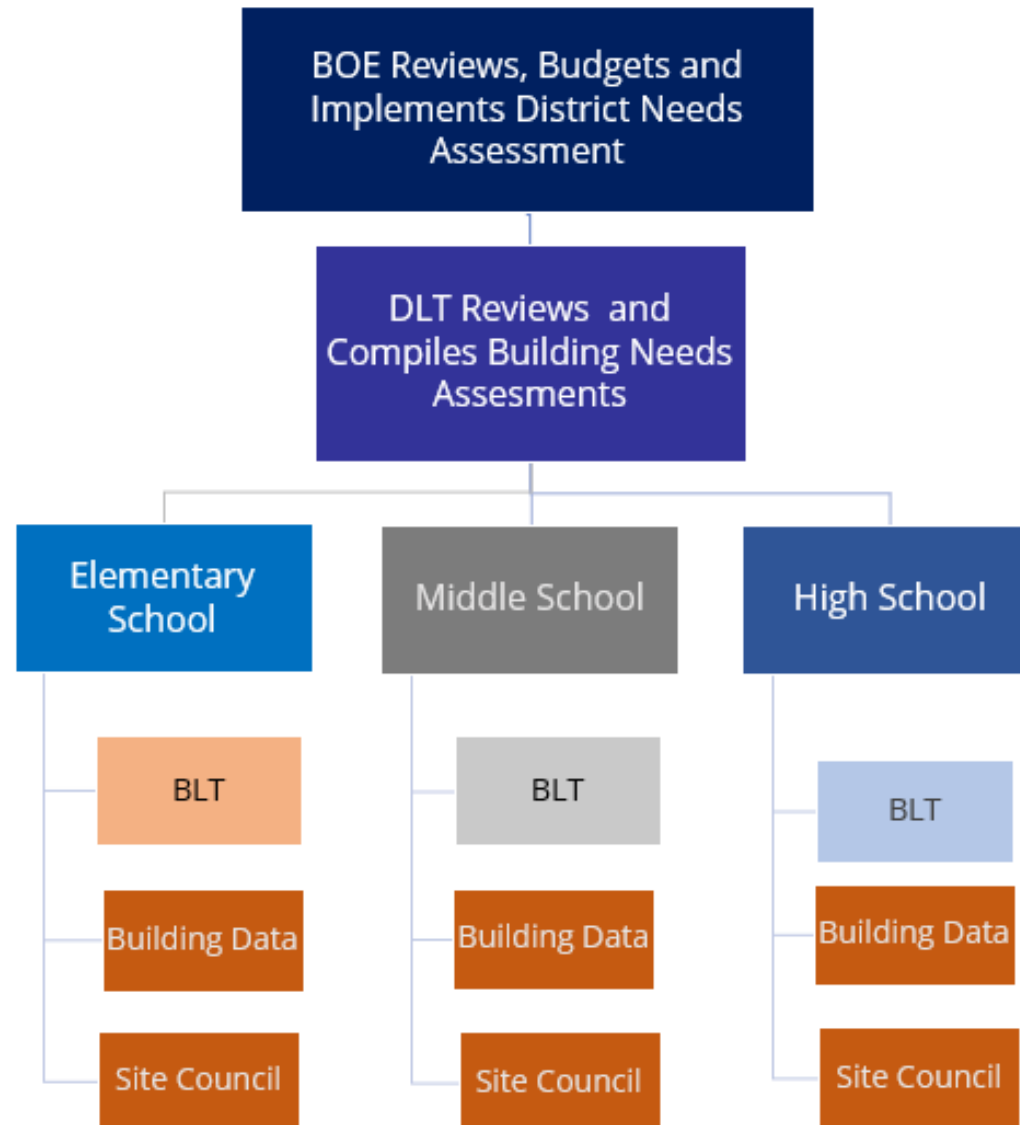
Note: Not all eligible students completed an ACT.



Report generated from ksreportcard.ksde.org on March 14, 2022 - Version 1.1.



District Needs Assessment Budgeting Process Chart





Questions?

Building Needs Assessment

- Sample document
- Excel
- 9 sections
- Can be edited
- May use your own Needs Assessment document

	A	B	C	D
1	2021-2022 School Year Building Needs Assessment for 2022-2023 Budget Considerations			
2	District:		Bldg #	Grade Levels:
3	School:			
4				
5	Please consider the following questions as you complete the needs assessment for your building.			
6	SECTION 1: Student Needs			Notes
7	a. How many students are in the building?			
8	b. Percentage of students with an active IEP?			
9	c. Percentage of students enrolled in ELL services			
10	d. Percentage of students identified as At-Risk(Free lunch)?			
11	e. What is the teacher to student ratio average?			
12	f. What is the teacher to student ratio median?			
13	g. Are the needs of foster care students being met? If no, what supports are needed?			
14	h. Are there gaps in student success among race/ethnicity student subgroups?			
15	i. Do you have a tiered system of support to target reading growth? Yes/No			
16	j. Do you have a tiered system of support to target math growth? Yes/No			
17	k. Do you have local assessments to measure reading growth? Yes/No			
18	l. Do you have local assessments to measure math growth? Yes/No.			
19	m. Do you have learning opportunities for students to focus on academic needs outside the traditional classroom setting? Yes/No			
20	n. Reviewing state assessment data, what steps are you taking for all students to maximize their scores?			
21	o. Have you set targets/goals to move students out of proficiency Levels 1 and 2 on state assessments?			
22	SECTION 2: State Board of Education Outcomes (please utilize your district KESA (accreditation) and Star Recognition plans/rubrics)			Notes
23	a. How are you measuring social/emotional growth?			
24	b. What are your targets/goals related to social/emotional growth?			
25	c. If you have Kindergarten in your school, how do you determine students are ready for Kindergarten?			
26	d. What are your targets/goals related to Kindergarten Readiness?			
27	e. How are you measuring the success of Individual Plans of Study?			
28	f. What are your targets/goals related to postsecondary completion/attendance?			
29	g. How are you ensuring students are civically engaged?			
30				
31	SECTION 3: Curriculum Needs			Notes
32	a. What extended learning opportunities are provided (after school programs, summer school programs, etc.)?			
33	b. Are there appropriate and adequate instructional materials?			
34	c. Is current technology appropriate? If no, what technology is needed to support the			
35				
36				

◀ ▶ ...
Flowchart
District Info
Bldg 1 Needs Assessment
BOE State Assessment Review
Bldg 1 State Assessment Review

Building Needs Assessment

	A	B	C	D
1	2021-2022 School Year Building Needs Assessment for 2022-2023 Budget Considerations			
2	District:		Bldg #	Grade Levels:
3	School:			
4				
5	Please consider the following questions as you complete the needs assessment for your building.			
36				
37	SECTION 4: Educational Capacities (pursuant to K.S.A. 72-3218)			Notes
38	b. If a high school ~ we teach the subjects and areas of instruction necessary to meet the graduation requirements adopted by the state board of education.			
39	c. Is every child in your school provided at least the following capacities?			
40	1. Sufficient oral and written communication skills to enable students to function in complex and rapidly changing civilization.			
41	2. Sufficient knowledge of economic, social, and political systems to enable students to make informed choices.			
42	3. Sufficient understanding of governmental processes to enable the student to understand the issues that affect his or her community, state and nation.			
43	4. Sufficient self-knowledge and knowledge of his or her mental and physical			
44	5. Sufficient grounding in the arts to enable each student to appreciate his or her cultural and historical heritage.			
45	6. Sufficient training or preparation for advanced training in either academic or vocational fields so as to enable each child to choose and pursue life work			
46	7. Sufficient levels of academic or vocational skills to enable students to compete favorably with their counterparts in surrounding states, in academics or in job market.			
47				
48	SECTION 5: Staff Needs			Notes
49	a. Is there adequate personnel/staff to meet the needs of the school and the needs of students under ESEA guidelines which requires every classroom to contain an educator who is certified in the content area being taught in said classroom and meet the goals of			
50	b. How many classified support staff are currently employed and how many are needed at this building?			
51	c. Are there appropriately licensed support personnel such as counselors, librarians,			
52	d. Are principals & other key staff trained to provide instructional leadership and professional development to teachers?			
53	e. What staff development is necessary for teachers to support student success and meet the school improvement goals of the building?			
54				
55	SECTION 6: Facility Needs			Notes
56	a. Is there adequate space for student learning?			
57	b. Are there necessary repairs and/or adjustment to the existing space that need to be			
58	c. Are additional School Buses needed or any additional Routes needed.			
59				



Building Needs Assessment

	A	B	C	D
1	2021-2022 School Year Building Needs Assessment for 2022-2023 Budget Considerations			
2	District:		Bldg #	Grade Levels:
3	School:			
4				
5	Please consider the following questions as you complete the needs assessment for your building.			
60	SECTION 7: Family Needs/Community Relations			Notes
61	a. Do you have regular events to engage parents with teachers?			
62	b. What types of caregiver training programs (teaching guardians how to give students help with homework, use of technology that student will be required to use, etc.) are provided?			
63	c. Do you have an active Site Council?			
64	d. Do you have active PTO, PTA, Booster Club, or other organizations with parent leadership?			
65	e. What types of communication exists with families? Is it adequate?			
66	f. What types of communication/social media exists with your community? Is it adequate?			
67				
68	SECTION 8: School Data			Notes
69	a. What is our building attendance rate?			
70	b. What is our building chronic absenteeism rate?			
71	c. What is our district chronic absenteeism rate?			
72	d. What is our district graduation rate?			
73	e. What is our district dropout rate?			
74	SECTION 8A: High School Needs (buildings with grades 10 through 12 only)			Notes
75	a. What is our building graduation rate			
76	b. What is our building dropout rate?			
77	c. What is our average comprehensive ACT score?			
78				
79	SECTION 9: Other Data			Notes
80	a. Based on your building leadership team analysis, what are the barriers your school faces with non-assessment related issues?			
81	1. Can these be achieved with additional resources?			
82	2. Why or why not?			
83	b. Additional building unique items:			
84				
85				
86				
87	<p>Sec. 8. On and after July 1, 2021, K.S.A. 72-1163 is hereby amended to read as follows: 72-1163. (a) Each year the board of education of a school district shall conduct an assessment of the educational needs of each attendance center in the district. Information obtained from such needs-assessment shall be used by the board when preparing the budget of the school district to ensure improvement in student academic performance. The budget of the school district shall allocate sufficient moneys in a manner reasonably calculated such that all students may achieve the goal set forth in K.S.A. 72-3218(c), and amendments thereto. The board also shall prepare a summary of the budget for the school district. The budgets and summary shall be in the form prescribed by the director pursuant to</p>			
88				

Flowchart
District Info
Bldg 1 Needs Assessment
BOE State Assessment Review
Bldg 1 State Assessment Review



Building Needs Assessment

Word Fillable Form

BUILDING NEEDS ASSESSMENT

Building Name

USD 000 USD Name

Grades Served: Grades Served

2021-2022 BUILDING NEEDS ASSESSMENT FOR 2022-2023 BUDGET CONSIDERATIONS

2021-2022 BUILDING NEEDS ASSESSMENT FOR 2022-2023 BUDGET CONSIDERATIONS

USD 000 USD Name

Building Name

Grades Served: Grades Served

SECTION 1: Student Needs		Notes
a. Student Headcount	0	
b. Percentage of students with an active IEP	0.00%	
c. Percentage of students enrolled in English Language Learner (ELL) services	0.00%	
d. Percentage of students identified as At-Risk (Free lunch)?	0.00%	

Building Needs Assessment

BUILDING NEEDS ASSESSMENT

Building Name

USD 000 USD Name

Grades Served: Grades Served

2021-2022 BUILDING NEEDS ASSESSMENT FOR 2022-2023 BUDGET CONSIDERATIONS

SECTION 1: Student Needs		Notes
e. Pupil-Teacher Ratio Average	0.0	
f. Pupil-Teacher Ratio Median	0.0	
g. Are the needs of Foster Care Students being met? If no, what supports are needed?		
h. Are there gaps in student success among race/ethnicity student subgroups?		
i. Is there a tiered system of support to target reading growth?		
j. Is there a tiered system of support to target math growth?		

Building Needs Assessment

BUILDING NEEDS ASSESSMENT

USD 000 USD Name

Grades Served: Grades Served

2021-2022 BUILDING NEEDS ASSESSMENT FOR 2022-2023 BUDGET CONSIDERATIONS

SECTION 1: Student Needs		Notes
k. Are there local assessments to measure reading growth?	<input type="checkbox"/>	<input type="checkbox"/>
l. Are there local assessments to measure math growth?	<input type="checkbox"/>	<input type="checkbox"/>
m. Are there learning opportunities for students to focus on academic needs outside the traditional classroom setting?	<input type="checkbox"/>	<input type="checkbox"/>
n. Reviewing state assessment data, what steps are you taking for all students to maximize their scores?	<input type="checkbox"/>	<input type="checkbox"/>
o. Are there set targets/goals to move students out of proficiency Levels 1 and 2 on state assessments?	<input type="checkbox"/>	<input type="checkbox"/>

Building Needs Assessment

BUILDING NEEDS ASSESSMENT

Building Name

USD 000 USD Name

Grades Served: Grades Served

2021-2022 BUILDING NEEDS ASSESSMENT FOR 2022-2023 BUDGET CONSIDERATIONS

SECTION 2: State Board of Education Outcomes (please utilize your district KESA (accreditation) and Star Recognition plans/rubrics)		Notes
a. How is social/emotional growth being measured?		
b. What are the targets/goals related to social/emotional growth?		
c. How do you determine students are ready for Kindergarten? (only if building serves Kindergarteners)		
d. What are the targets/goals related to Kindergarten Readiness? (only if building serves Kindergarteners)		
e. How are successes of Individual Plans of Study being measured?		
f. What are the targets/goals related to postsecondary completion/attendance? (only if building serves Grade 12)		
g. How are you ensuring students are civically engaged?		

Building Needs Assessment

BUILDING NEEDS ASSESSMENT

Building Name

USD 000 USD Name

Grades Served: Grades Served

2021-2022 BUILDING NEEDS ASSESSMENT FOR 2022-2023 BUDGET CONSIDERATIONS

SECTION 3: Curriculum Needs		Notes
a. What extended learning opportunities are provided (after school programs, summer school programs, etc.)?	<input type="checkbox"/>	<input type="checkbox"/>
b. Are there appropriate and adequate instructional materials?	<input type="checkbox"/>	<input type="checkbox"/>
c. Is current technology appropriate? If no, what technology is needed to support the curriculum?	<input type="checkbox"/>	<input type="checkbox"/>

Building Needs Assessment

BUILDING NEEDS ASSESSMENT

Building Name

USD 000 USD Name

Grades Served: Grades Served

2021-2022 BUILDING NEEDS ASSESSMENT FOR 2022-2023 BUDGET CONSIDERATIONS



SECTION 4: Educational Capacities (pursuant to K.S.A. 72-3218)

Notes

b. Subjects and areas of instruction necessary to meet the graduation requirements adopted by the state board of education are taught. (only if building serves Grades 10-12)

c. Is every child in your school provided at least the following capacities?

1. Sufficient oral and written communication skills to enable students to function in complex and rapidly changing civilization.

2. Sufficient knowledge of economic, social, and political systems to enable students to make informed choices.

Building Needs Assessment

BUILDING NEEDS ASSESSMENT

Building Name

USD 000 USD Name

Grades Served: Grades Served

2021-2022 BUILDING NEEDS ASSESSMENT FOR 2022-2023 BUDGET CONSIDERATIONS

SECTION 4: Educational Capacities (pursuant to K.S.A. 72-3218)		Notes
3. Sufficient understanding of governmental processes to enable the student to understand the issues that affect his or her community, <u>state</u> and nation.	<input type="checkbox"/>	<input type="checkbox"/>
4. Sufficient self-knowledge and knowledge of his or her mental and physical wellness.	<input type="checkbox"/>	<input type="checkbox"/>
5. Sufficient grounding in the arts to enable each student to appreciate his or her cultural and historical heritage.	<input type="checkbox"/>	<input type="checkbox"/>
6. Sufficient training or preparation for advanced training in either academic or vocational fields <u>so as</u> to enable each child to choose and pursue life work intelligently.	<input type="checkbox"/>	<input type="checkbox"/>
7. Sufficient levels of academic or vocational skills to enable students to compete favorably with their counterparts in surrounding states, in academics or in job market.	<input type="checkbox"/>	<input type="checkbox"/>

Building Needs Assessment

BUILDING NEEDS ASSESSMENT

USD 000 USD Name

Grades Served: Grades Served

2021-2022 BUILDING NEEDS ASSESSMENT FOR 2022-2023 BUDGET CONSIDERATIONS

SECTION 5: Staff Needs		Notes
a. Is there adequate personnel/staff to meet the needs of the school and the needs of students under ESEA guidelines, which requires every classroom to contain an educator who is certified in the content area being taught in said classroom, and meet the goals of the school?	<input type="checkbox"/>	<input type="checkbox"/>
b. How many classified <u>support</u> staff are currently employed?	<input type="text" value="0"/>	<input type="checkbox"/>
c. How many classified <u>support</u> staff are needed?	<input type="text" value="0"/>	<input type="checkbox"/>
d. Are there enough appropriately licensed support personnel such as counselors, librarians, nurses, etc.?	<input type="checkbox"/>	<input type="checkbox"/>

Building Needs Assessment

BUILDING NEEDS ASSESSMENT

USD 000 USD Name

Grades Served: Grades Served

2021-2022 BUILDING NEEDS ASSESSMENT FOR 2022-2023 BUDGET CONSIDERATIONS

SECTION 5: Staff Needs		Notes
e. Are principals & other key staff trained to provide instructional leadership and professional development to teachers?		
f. What staff development is necessary for teachers to support student success and meet the school improvement goals?		

Building Needs Assessment

BUILDING NEEDS ASSESSMENT

Building Name

USD 000 USD Name

Grades Served: Grades Served

2021-2022 BUILDING NEEDS ASSESSMENT FOR 2022-2023 BUDGET CONSIDERATIONS

SECTION 6: Facility Needs		Notes
a. Is there adequate space for student learning?	<input type="checkbox"/>	<input type="checkbox"/>
b. Are there necessary repairs and/or adjustment to the existing space that need to be made?	<input type="checkbox"/>	<input type="checkbox"/>
c. Are additional School Buses needed or any additional Routes needed?	<input type="checkbox"/>	<input type="checkbox"/>

Building Needs Assessment

BUILDING NEEDS ASSESSMENT

Building Name

USD 000 USD Name

Grades Served: Grades Served

2021-2022 BUILDING NEEDS ASSESSMENT FOR 2022-2023 BUDGET CONSIDERATIONS

SECTION 7: Family Needs/Community Relations

Notes

a. Do you have regular events to engage parents with teachers?

☐☐

b. What types of caregiver training programs (teaching guardians how to give students help with homework, use technology that students will be required to use, etc.) are provided?

☐☐

c. Do you have an active Site Council?

☐☐

d. Do you have active PTO, PTA, Booster Club, or other organizations with parent leadership?

☐☐

e. What types of communication exists with families? Is it adequate?

☐☐

f. What types of communication/social media exists with your community? Is it adequate?

☐☐

Building Needs Assessment

BUILDING NEEDS ASSESSMENT

Building Name

USD 000 USD Name

Grades Served: Grades Served

2021-2022 BUILDING NEEDS ASSESSMENT FOR 2022-2023 BUDGET CONSIDERATIONS

SECTION 8: School Data		Notes
a. Building Attendance Rate	0.00%	
b. Building Chronic Absenteeism Rate	0.00%	
c. District Chronic Absenteeism Rate	0.00%	
d. District Graduation Rate	0.00%	
e. District Dropout Rate	0.00%	

Building Needs Assessment

BUILDING NEEDS ASSESSMENT

USD 000 USD Name

Grades Served: Grades Served

Building Name

2021-2022 BUILDING NEEDS ASSESSMENT FOR 2022-2023 BUDGET CONSIDERATIONS

SECTION 8: School Data

Notes

SECTION 8A: High School Needs (buildings with grades 10 through 12 only)

a. What is our building graduation rate

0.00%



b. What is our building dropout rate?

0.00%



c. What is our average comprehensive ACT score?

0.00%



Building Needs Assessment

BUILDING NEEDS ASSESSMENT

Building Name

USD 000 USD Name

Grades Served: Grades Served

2021-2022 BUILDING NEEDS ASSESSMENT FOR 2022-2023 BUDGET CONSIDERATIONS

SECTION 9: Other Data		Notes
a. Based on the building leadership team's analysis, what are the barriers your school faces with non-assessment related issues?		
1. Can these be achieved with additional resources?		
2. Why or why not?		
b. Additional building unique items:		



Questions?

State Assessment Review by BOE



BOE State Assessment Review, Planning and Discussion

- Review data:
 - Building accountability reports.
 - Suppressed data.
 - Be aware to not release PII.
- 3 Questions:
 - Barriers related to student needs.
 - Budget actions.
 - Time to achieve.



BOE State Assessment Review, Planning and Discussion

- Opportunity for the district to budget and target ways to close gaps.
- At your budget approval meeting – minutes must include that the needs assessments from the buildings were provided, evaluated and how the board used them and the state assessment review in the budgeting process.



Building State Assessment Review for Budget Suggestions to the local board

- Consider needs assessment and complete the building suggestions tab for each building.
- Questions are straight from the bill; Barriers, Budget Actions, & Time.
- Send results to the district office.

	A	B	C	D	E	F	G	H	I	J
1	2020-2021 School Year State Assessment Review for 2022-2023 Budget Considerations									
2	District:			Bldg #	Grade Levels:					
3	School:									
4										
5										
6	1	Identify the barriers that must be overcome for each student to achieve grade level proficiency on the state assessments if the budget actions would be implemented.			Input 4-digit bldg # to populate school name and grade levels. Bldg #'s can be found on the District Info tab.					
7										
8										
9										
10	2	Identify the budget actions that should be taken to address and remove those barriers.								
11										
12										
13										
14	3	Identify the amount of time the board estimates it will take for each student to achieve grade level proficiency on the state assessments if the budget actions would be implemented.								

Light yellow cells are intended to be filled in.

Kansas State Department of Education | www.ksde.org |

Flowchart District Info Bldg 1 Needs Assessment BOE State Assessment Review Bldg 1 State Assessment Review

District Office Preparation

Superintendent, administration or other key district leaders prepare and refine the suggestions for the district summary and BOE review.

May be one district-wide report

	A	B	C	D	E	F
1	2020-2021 School Year State Assessment Review for 2022-2023 Budget Considerations					
2	District: _____					
3	Based upon your school needs assessment and review of state assessment results, for the following categories, if applicable please identify (1) the barriers that must be overcome for each student to achieve grade level proficiency on assessments; (2) the budget actions that should be taken to address and remove those barriers; and (3) the amount of time the board estimates it will take for each student to achieve grade level proficiency on the state assessments if the budget actions would be implemented.					
4	_____			_____		
5	Board President			Date		
6						
7						
8	School	Grade Levels	1. Barriers Related to Student Needs	2. Budget Actions	3. Time for students to Achieve	Board Rationale/Comments
9	Building 1					
10	Building 2					
11	Building 3					
12	Building 4					
13						
14						
15						
16						
17						
18						
19						
20						
21						
22						

◀ ▶ ... Flowchart District Info Bldg 1 Needs Assessment BOE State Assessment Review Bldg 1 State Assessment Review



State Assessment and Budget Review Document

- May use your own needs assessment, strategic plan,
- The only required specific document is the State Assessment Summary
- Documents need to be posted on the district's website:
 - Needs Assessment for each building
 - District State Assessment Review
- BOE minutes reflect that the assessments were provided to the board, evaluated by the board, and used in the budget's approval.

Already Doing Most of This – Prescriptive



What Do We Do With This?

Linking the Dollars to Learning

A. What does our district NEED? Wish to ACHIEVE?

1. Academics
2. Personnel
3. Supplies, Textbooks, Programs, Equipment, ...
4. Facilities

B. How do we SUCCEED in meeting the NEEDS?

**BARRIERS
ACTION
TIMELINES**



What Do We Do With This? Cont.

C. FUND the NEEDs

D. Review your Data

1. What is it telling you about our Efforts? Keep it? Trash it? Tweak it?
2. What are Stakeholders saying
3. Admin, Teachers, Students, Parents
4. Board of Education

E. Re-Start Process

**BARRIERS
ACTION
TIMELINES**



What does the Needs Assessment tell us?

- **Population**
 - Impact on programs – special needs, at-risk, curriculum, ELL ...
 - How are students succeeding
 - Personnel
 - Transportation
 - Food Service
 - Target Areas
- **Curriculum**
 - Programs
 - Textbooks
 - Technology
 - Staff
 - Early Childhood
 - Additional Learning Opportunities
- **Facility**
 - Space
 - Repairs
 - Furniture
 - Equipment
- **Personnel**
 - Adding Programs
 - Eliminating Programs
 - Support Staff
- **Outcomes**
 - Attendance
 - Graduation
 - State BOE Goals
 - Rose Capacities
- **Community/Family**
 - Engagement
 - Support Programs
 - Communication Needs
- **Data**
 - Accountability Reports

Allocate \$\$\$'s to these identified areas



Review

- Each Building complete a yearly NEEDS ASSESSMENT
- Publish the assessments and review on the DISTRICT WEBSITE
- Board monitors state and needs assessments and identifies the Barriers, Actions, and Timelines
- Budget approval meeting minutes reflect that the building needs assessments were provided and evaluated by the board and used in the budgeting process
- Continually MONITOR BUDGET and NEEDS ASSESSMENTS throughout the year
- Re-start Process





Questions?



Name: Dale Brungardt
Title: Director
Team: School Finance
(785) 296-3872
dbrungardt@ksde.org

The Kansas State Department of Education does not discriminate on the basis of race, color, national origin, sex, disability or age in its programs and activities and provides equal access to the Boy Scouts and other designated youth groups. The following person has been designated to handle inquiries regarding the nondiscrimination policies: KSDE General Counsel, Office of General Counsel, KSDE, Landon State Office Building, 900 S.W. Jackson, Suite 102, Topeka, KS 66612, (785) 296-3201.





Kansas leads the world
in the success of each student.

Kansans
CAN

#KansansCan

KANSAS STATE DEPARTMENT OF EDUCATION www.ksde.org